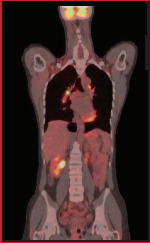




Vol. 14 Issue 12 | Dec 19



PET/CT



PET



CT



MRI | PET/CT | CT | Mammo
209 Limestone Pass
Cottage Grove, WI 53527
www.sharedmed.com

RETURN SERVICE REQUESTED

DECEMBER

MOBILE DIGITAL PET/CT NOW AVAILABLE



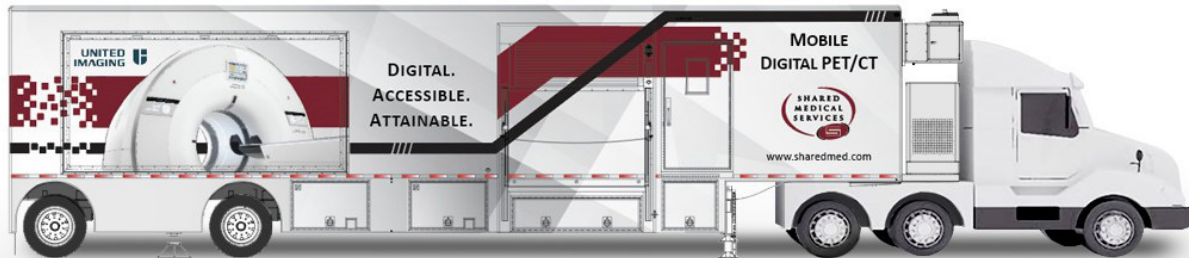
Shared Medical Services Makes Mobile Digital PET/CT Accessible and Attainable.

As one of the largest providers of specialized diagnostic imaging services in the United States, we are pleased to announce we are once again leading the way in bringing the latest technologies to market. Through a strategic collaboration with United Imaging, SMS will be the first in the United States to offer a mobile digital positron emission tomography (PET) / computed tomography (CT) unit.

For nearly 40 years the vision of Shared Medical Services has been to provide innovative imaging and service solutions to health care facilities regardless of their size, location or capital budget. That vision is as strong today as it was back in 1980. "We are continuously striving to bring the latest technology and the best service to market, each and every day," adds co-CEO Greg Glesinger. "We are committed to that and that will never change."

Part of what has led to the outstanding growth and success of SMS has been the ability to continually bring leading-edge imaging technology to the mobile industry. Whether it was mobile MRI in 1987, mobile PET in 2001 or mobile PET/CT in 2003, SMS has led the industry in bringing the services the marketplace wants and needs to its customers.

"SMS was excited to debut mobile digital PET/CT at this year's RSNA and offer this service to our customers," states SMS co-CEO, Lisa Arington. "This service will improve access to the latest imaging technologies for facilities and patients across the country, regardless of location."



PET/CT Service Provided by:



Shared Medical Services
www.sharedmed.com